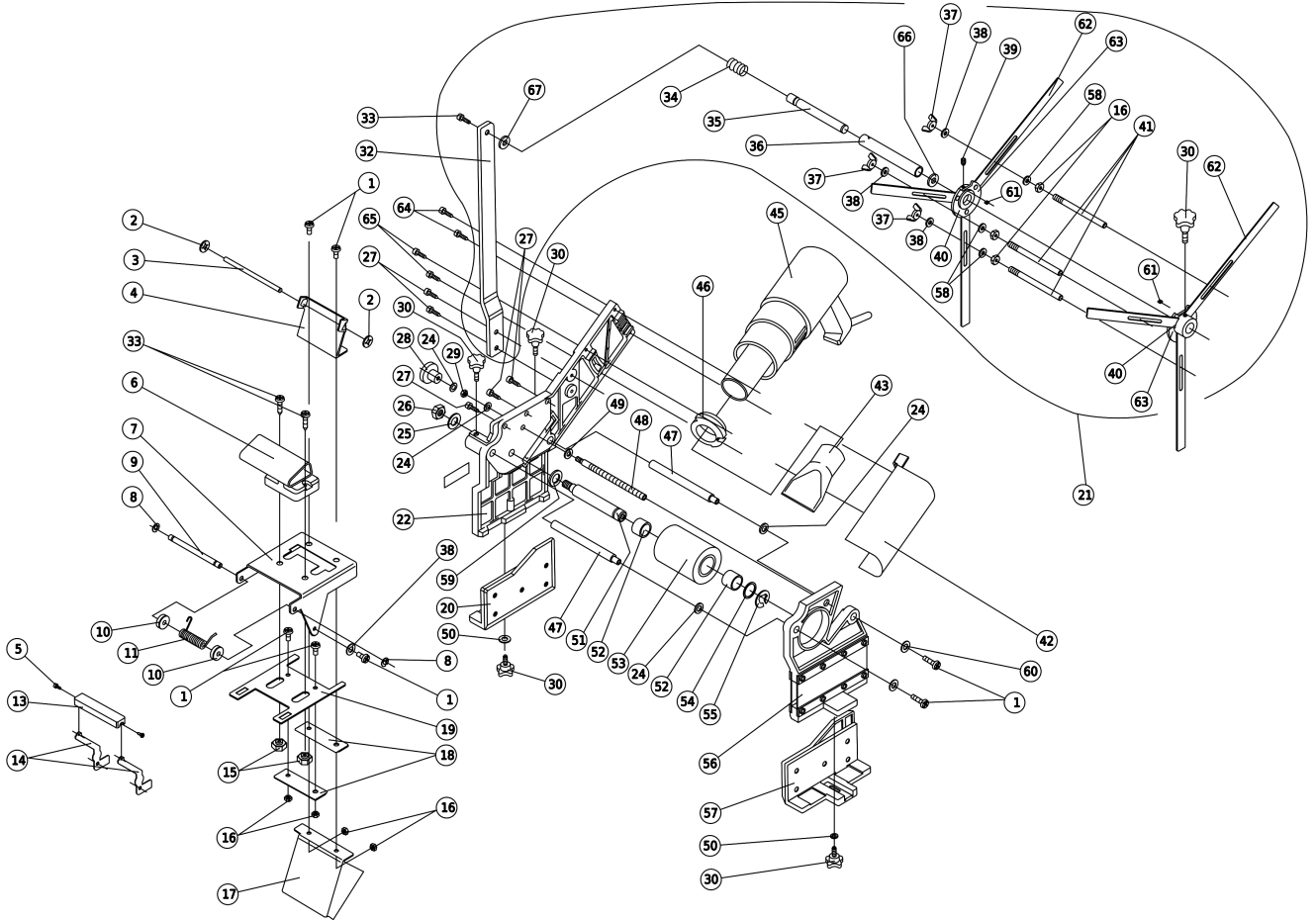




Technical information
Explosion drawing and parts list

AG98F (5200200) AG98F EDGE BANDER | Version B (From serial number 24473)





Technical information
Explosion drawing and parts list

AG98F (5200200) AG98F EDGE BANDER | Version B (From serial number 24473)

Pos.	Serial No.	Code	Description	Quantity
1		1672008	SCREW M.4X10 PH.	3
2		5284002	ARANLOCK	2
3		5221074	ROD	1
4		5234048	FAN GUIDE	1
5		1370002	PAN HD. TAPPING SCREW 6X3/8 PH.BZ.	2
6		3002020	HANDLE KNOB	1
7		5234046	CUTTER BLOCK	1
8		9588003	RETAINING RING D.4	2
9		5221077	SHAFT	1
10		5221081	SHAFT SUPPLEMENT	2
11		5226028	SPRING	1
13		5203020	HANDLE	1
14		5234050	LEVER	2
15		5202652	NUT	2
16		2385005	HEX. NUT M.4	7
17		5234047	DEFLECTOR	1
18		5231010	FIXED BLADE AG98	2
19		5234049	CUTTER BLOCK SLIDE	1
20		5246009	RIGHT PRESSER ASS'Y	1
21		5245047	FEEDER ASS'Y	1
22		5206177	FIXED BODY	1
24		2080002	WASHER D.6.4X12.2X0.8	4
25		4383008	WASHER AET D.8.4	1
26		1185003	HEX. NUT M.8	1
27		1970001	PAN HD. TAPPING SCREW 8X1/2 PH.B.	5
28		1125003	KNOB	1
29		2085002	HEX. NUT M.6	1
30		1025106	KNOB M 5X15 mm (CP)	4
32		5234051	ARM HOLDER	1
33		1472017	PAN HD. SCREW M.4X15 PH.	3
34		5226038	SPRING	1
35		5221087	SHAFT	1
36		5222009	TELESCOPIC SHAFT	1
37		5289025	WING NUT	3
38		1680026	WASHER D.4.3 DIN125	1
39		5275049	HEX. SOCKET SET SCREW M.5X6	1
40		5245046	FEEDER RING WITH WINGS	2
41		5222014	ROD	3
42		5245168	PROTECTOR ASS'Y	1
43		5234054	PIPE	1
45		5245169	HEATER UNIT 230 V. (V1)	1
45		5245170	HEATER UNIT 110 V.	1
46		5299034	INSULATING RING	1
47		5221050	GUIDE ROD	2
48		5229077	REGULATION SPINDLE	1
49		1683004	DISC SPRING D.6.2	1
50		2280004	WASHER D.5.2X11.1X0.7	2
51		5221029	ROLLER SHAFT	1



Technical information
Explosion drawing and parts list

AG98F (5200200) AG98F EDGE BANDER | Version B (From serial number 24473)

52	3812002	SELF LUBRICATED BEARING A-12X17X12	2
53	5204021	PRESSER ROLLER	1
53	5246025	INCLINED ROLLER WITH BEARINGS	1
53	5246026	ROLLER WITH BEARINGS	1
54	3880008	WASHER D.12X20X0.5	1
55	3888039	RETAINING RING D.10	1
56	5246011	ADJUSTABLE CLAMP ASS'Y	1
57	5246010	LEFT PRESSER ASS'Y	1
58	3883002	WASHER AET D.4.3	3
59	2023022	WASHER	1
60	9581010	TOOTHED WASHER D.4	2
61	5285011	NUT M.5	2
62	5234053	FLIGHT	6
63	5203088	FLIGHT HOLDER	2
64	8678008	SCREW M.4X10 PH.	2
65	8678009	SCREW M.4X15 PH.	2
66	5080007	WASHER D.10.5 DIN125	1
67	5284010	WASHER	1
68	5231095	MOVABLE BLADE AG98	1