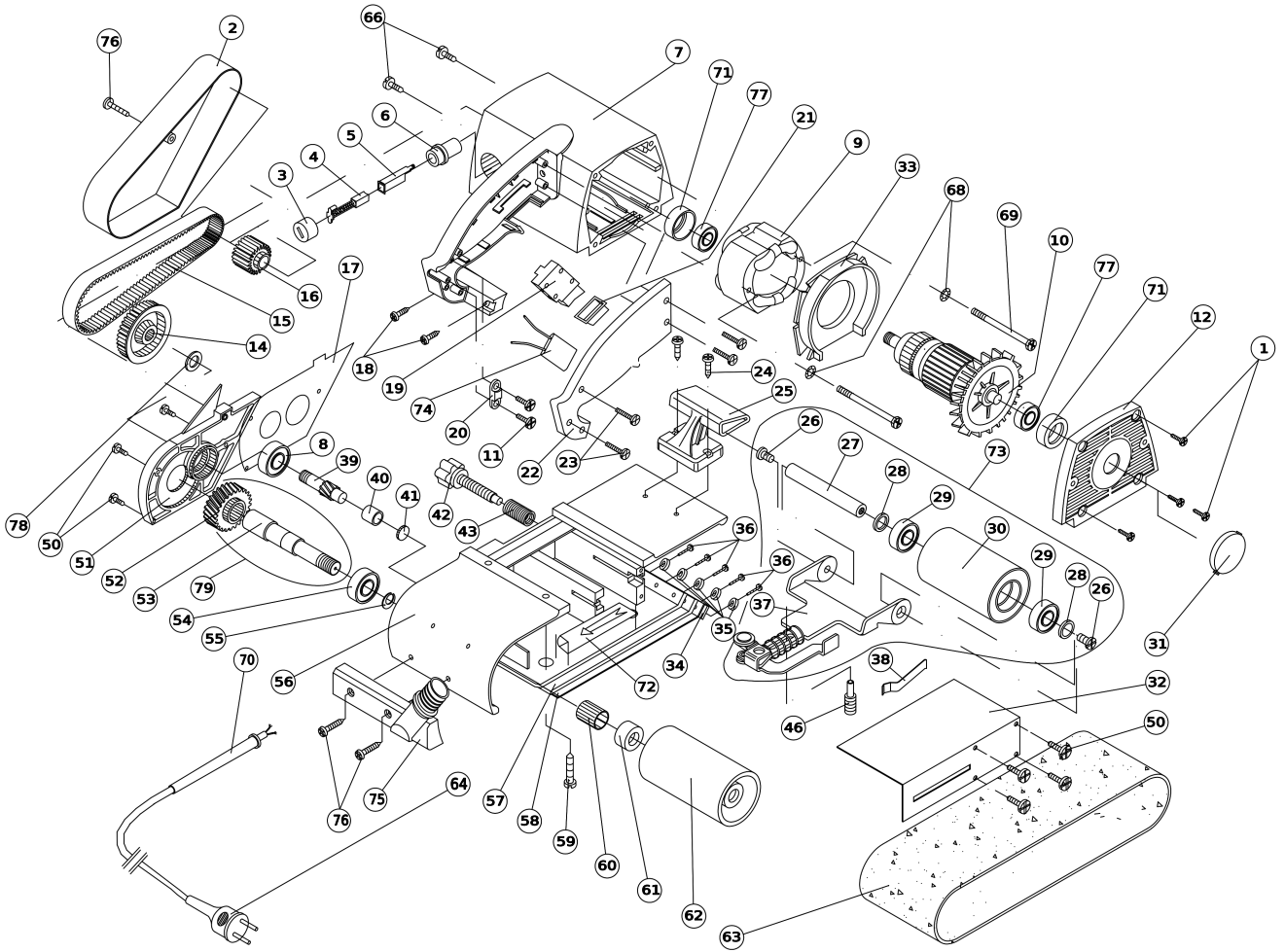




Technical information  
Explosion drawing and parts list

LB31E (3100100) BELT SANDER LB31E | Version B (From serial number 14818)





Technical information  
Explosion drawing and parts list

LB31E (3100100) BELT SANDER LB31E | Version B (From serial number 14818)

Pos.	Serial No.	Code	Description	Quantity
1		4070011	PAN HD. TAPPING SCREW 10X1 PH.B.	4
2		3146173	COVER	1
3		6018011	BRUSH CAP	2
4		2417021	CARBON BRUSHES SET	1
4		3117026	CARBON BRUSH SET (110 V.)	1
5		6018007	BRUSH HOLDER	2
6		6018008	BRUSH HOLDER INSULATOR	2
7		3102185	HOUSING	1
8		3010004	BALL BEARING 6200 LLB	1
9		3155092	STATOR 230 V.	1
9		3155093	STATOR 110/127 V.	1
10		3151092	ARMATURE 230 V.	1
10		3151094	ARMATURE 110/127 V.	1
11		1970001	PAN HD. TAPPING SCREW 8X1/2 PH.B.	2
12		3106148	MOTOR COVER	1
14		3087018	PULLEY	1
15		3087021	BELT	1
16		3087017	PULLEY	1
17		3024089	SEAL PACKING	1
18		3178016	SCREW M.5X15 PH.	2
19		3015014	SWITCH	1
20		4302025	CORD CLAMP	1
21		3003068	SWITCH PROTECTION	1
22		3002081	HANDLE COVER	1
23		1170028	PAN HD. TAPPING SCREW 8X3/4 PH.BZ.	5
24		8678009	SCREW M.4X15 PH.	2
25		3002020	HANDLE KNOB	1
26		3173027	PAN HD SCREW M.6X10	2
27		3020017	SHAFT	1
28		3024079	SPACER	2
29		4010005	BALL BEARING 6001 2RS	2
30		3001086	IDLE ROLLER	1
31		3002089	END CAP	1
32		3123215	BELT TIGHTENER COVER	1
33		3102178	DEFLECTOR	1
34		3023045	CLAMP BAR	1
35		3022064	SPACER	5
36		1370002	PAN HD. TAPPING SCREW 6X3/8 PH.BZ.	5
37		4000069	FORK ASS'Y	1
38		3024046	LEAF SPRING	1
39		3087019	PINION	1
40		4011006	NEADLE BEARING HK 0810	1
41		3024078	CAP	1
42		3025026	REGULATING KNOB	1
43		3026021	SPRING	1
46		3022090	SLOTTED SET SCREW	1
50		7178003	SCREW M.5X12 PH.	7
51		3001076	GEAR COVER	1



**Technical information**  
Explosion drawing and parts list

**LB31E (3100100) BELT SANDER LB31E | Version B (From serial number 14818)**

52	3145008	PULLEY WITH SHAFT ASS'Y	1
53	3145008	PULLEY WITH SHAFT ASS'Y	1
54	1210001	BALL BEARING 6202 LLB	1
55	1288012	RETAINING RING	1
56	3001075	BODY ASS'Y	1
57	4024051	SHOE CUSHION	1
58	4023051	SHOE PLATE	1
59	3070030	PAN HD. TAPPING SCREW 12X1 PH. BZ.	4
60	3011002	NEADLE BEARING HK 1412	1
61	3024083	WASHER	1
62	3004012	DRIVING ROLLER	1
63	4491007	PACK 10 SANDING BELTS GR50	1
64	4645495	CORD ASS'Y (EUROPE)	1
64	4645505	CORD ASS'Y (110 V)	1
66	2070004	PAN HD. TAPPING SCREW 6X1/4 PH.BZ	2
68	1981001	TOOTHED WASHER D.4.3	2
69	9570044	PAN HD.TAPPING SCREW 8X63	2
70	8002043	CORD ARMOR	1
71	3104083	BUSHING	2
72	3119188	LABEL	1
73	4000070	FORK ASS'Y WITH ROLLER	1
74	9168121	CAPACITOR	1
75	4103031	NOZZLE	1
76	3178017	SCREW M.5X25 PH.	3
77	3110028	BALL BEARING 6000 2RZ	2
78	3123171	WASHER	1
79	3145008	PULLEY WITH SHAFT ASS'Y	1
80	6689043	BALL D.6.35	1