

Special Features:

- Length: 300, 350, 400, 450, 500, 550mm.
- The drawer side-board is 88mm high.
- Drawer width can be designed freely with automatic error adjustment.
- Hidden full pullout silencing sliding skid can bear 35kg and enjoys
- excellent stability and quite and smooth sliding performance.
- Quick installation and dismantle.
- Newly-designed built-in damper is free from reinstallation and ensures soft and smooth drawer movements.

Basic Length	Internally usable drawer depth	Minimum installation depth of drawer	Minimum installation height
300mm	274mm	300mm	110mm
350mm	324mm	350mm	110mm
400mm	374mm	400mm	110mm
450mm	424mm	450mm	110mm
500mm	474mm	500mm	110mm
550mm	524mm	550mm	110mm

1. Guide

Left/Right

Length:

300mm
350mm
400mm
450mm
500mm
550mm

2. Drawer Side & Decorative Cap

Left/Right

Length:

300mm
350mm
400mm
450mm
500mm
550mm

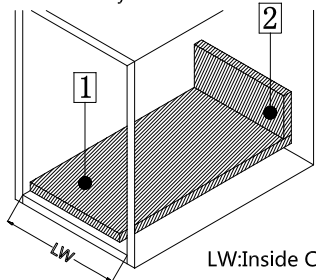
3. Back connector

Left / Right

4. Front connector

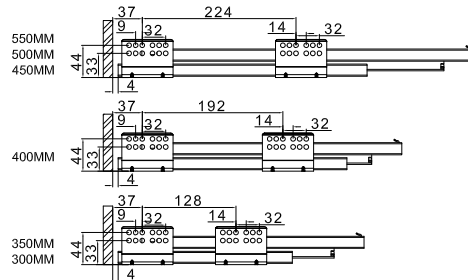
Left / Right

Technology pivot: Bottom and Back Panel Measurement 18MM Density Panel



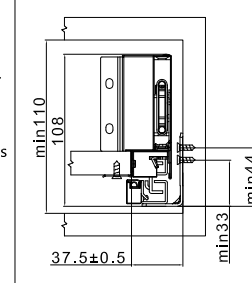
- LW: Inside Cabinet Width
- Bottom panel width=Inside Cabinet Width-75±0.5
Bottom panel length=Runner length-10MM
 - Back panel height= 68MM
Back panel width=Inside Cabinet Width-87±0.5

Runner Installation(mm)

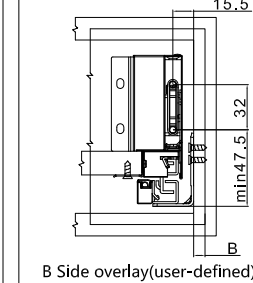


Basic length: 300/350/400/450/500/550

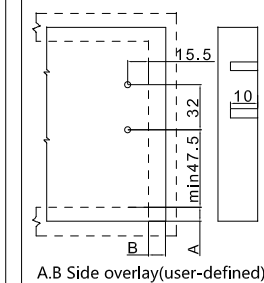
Inside Cabinet Dimension



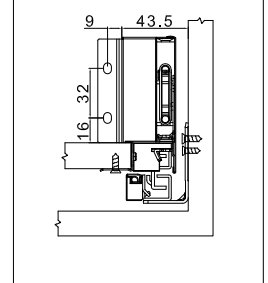
Front Panel Mounting Positions



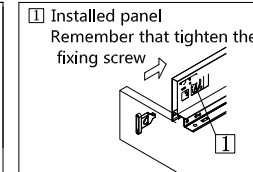
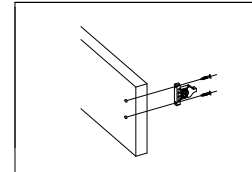
Front Fixing Brackets Positions



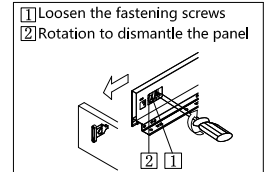
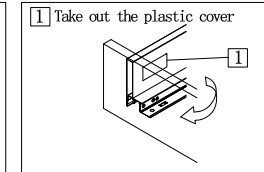
Back Panel Mounting Positions



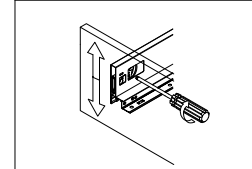
Front fixing brackets mounting



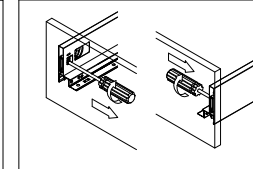
Front panel removing



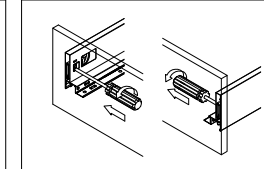
Front panel height adjustment : ±2mm



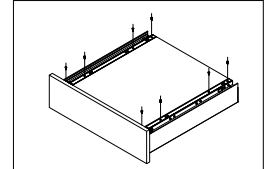
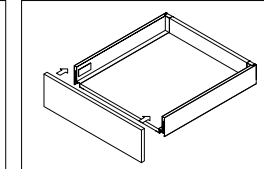
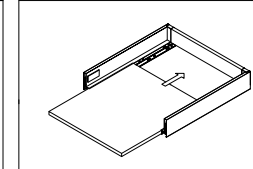
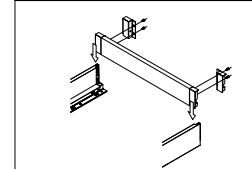
Front panel side adjustment : right 1mm



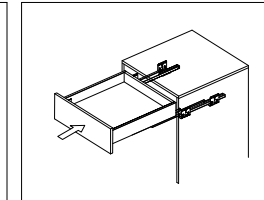
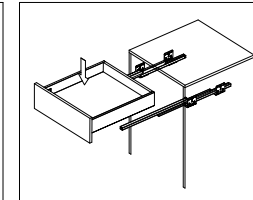
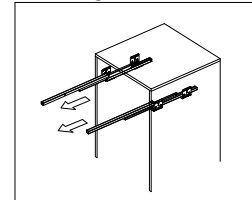
Front panel side adjustment : left 1mm



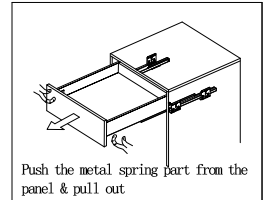
Mounting the drawer



Installing the drawer



Removing the drawer



Function of the damper

