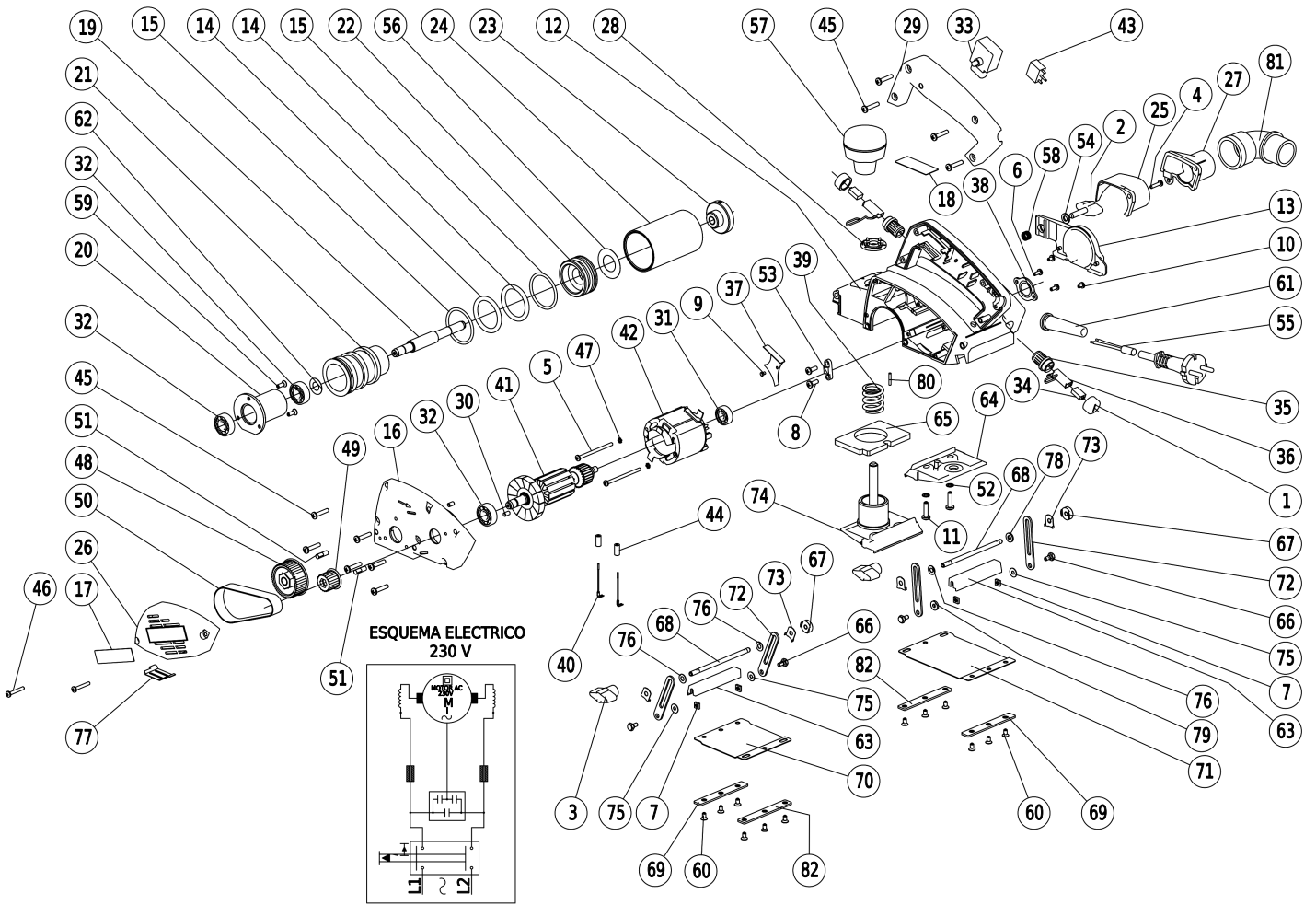




Technical information  
Explosion drawing and parts list

CE123N (2300500) CE123N CURVED ABRASIVE PLANER | Version D (From serial number 1380)





Technical information  
Explosion drawing and parts list

CE123N (2300500) CE123N CURVED ABRASIVE PLANER | Version D (From serial number 1380)

Pos.	Serial No.	Code	Description	Quantity
1		1018003	BRUSH CAP	2
2		1025104	KNOB M 6X25 mm (CG)	1
3		1025110	KNOB M 5 (CG) FEMALE	2
4		1170003	PAN HD. TAPPING SCREW 6X5/8 PH.B.	1
5		1270047	PAN HD. TAPPING SCREW 6X57 PH.B.	2
6		1370002	PAN HD. TAPPING SCREW 6X3/8 PH.BZ.	2
7		1685018	SQUARE NUT M.4	4
8		1970001	PAN HD. TAPPING SCREW 8X1/2 PH.B.	2
9		1989015	UNEX RIVET 1303	1
10		2070004	PAN HD. TAPPING SCREW 6X1/4 PH.BZ	2
11		2070009	PAN HD. TAPPING SCREW 10X3/4 PH.B.	2
12		2302468	HOUSING	1
13		2302472	COVER	1
14		2304219	JOINT 35X5X45	2
15		2304220	JOINT 39X3X45	2
16		2306353	MOTOR COVER	1
17		2319357	LABEL	1
18		2319358	LABEL	1
19		2322370	SHAFT	1
20		2322371	BEARING HOLDER	1
21		2322372	HEAD	1
22		2322373	BUSHING	1
23		2322374	NUT	1
24		2345510	ABRASIVE ROLLER GR.40	1
24		2345511	ABRASIVE ROLLER GR.50	1
24		2345512	ABRASIVE ROLLER GR.60	1
24		2345513	ABRASIVE ROLLER GR.80	1
24		2345514	ABRASIVE ROLLER GR.60 (ZIRCONIUM OXIDE)	1
25		3502069	DUST GUIDE	1
26		3545497	COVER ASSY	1
27		3502729	NOZZLE	1
28		3502194	WASHER	1
29		3503063	HANDLE COVER	1
30		3504030	RUBBER PIN	2
31		3510009	BALL BEARING 627-Z	1
32		3510010	BALL BEARING 6000-ZZ	3
33		3515034	SWITCH	1
34		3517016	BRUSHES SET	1
35		3518021	BRUSH HOLDER	2
36		3518022	BRUSH HOLDER	2
37		3524009	FAN GUIDE - A	1
38		3524067	BEARING COVER	1
39		3526015	SPRING	1
40		3550111	CONNECTION STATOR/SWITCH	2
41		3551096	ARMATURE 110/127 V.	1
41		3551097	ARMATURE 230 V.	1
42		3555087	STATOR ASS'Y 230 V.	1
42		3555088	STATOR ASS'Y 110 V.	1



Technical information  
Explosion drawing and parts list

CE123N (2300500) CE123N CURVED ABRASIVE PLANER | Version D (From serial number 1380)

43	9868221	CAPACITOR	1
44	3568220	FERRITE	2
45	3570025	PAN HD. TAPPING SCREW 8X7/8 PH.BZ.	10
46	3570032	PAN HD. TAPPING SCREW 6X1 PH.BZ.	2
47	3581004	TOOTHED WASHER D.3	2
48	3587076	PULLEY	1
49	3587077	PULLEY	1
50	3587079	BELT	1
51	3588029	ROLL PIN D.5X16	2
52	3883005	WASHER AET D.5.3	2
53	4302025	CORD CLAMP	1
54	4380012	WASHER D.6.4 DIN125	1
55	4645495	CORD ASS'Y (EUROPE)	1
55	4645505	CORD ASS'Y (110 V)	1
56	4680057	WASHER D.37X20.2X0.2	1
57	6525027	REGULATING KNOB	1
58	7226070	SPRING	1
59	7278007	SCREW M.4X12 PH.	3
60	7278014	SCREW M.4X8	12
61	8002043	CORD ARMOR	1
62	9580005	WASHER D.10.2X20X0.26	2
63	9601003	BASE SUPPORT	2
64	2306380	BASE	1
65	9604006	SLIDE JOINT	1
66	9621004	ADJUSTING SCREW M.4X8.7	4
67	9621022	NUT	2
68	9621036	ROD M.5	2
69	9623001	BASE BRACKET	2
70	9623003	FRONTAL SLIDE BASE	1
71	9623005	REAR SLIDE BASE	1
72	9623010	REGULATING ROD	4
73	9623245	SCALE	4
74	9645004	FRONT SLIDE ASS'Y	1
75	9680009	WASHER D.4.1X11X0.5	3
76	9680018	WASHER D.5.2X11X0.5	3
77	3523414	BELT PROTECTION	1
78	2322404	WASHER D.5.2XD.11X1.5	1
79	2322405	WASHER D.4.2XD.11X2	1
80	9688126	ROLL PIN D.2.5X16	1
81	3502729	NOZZLE	1
82	9623459	BRACKET	2