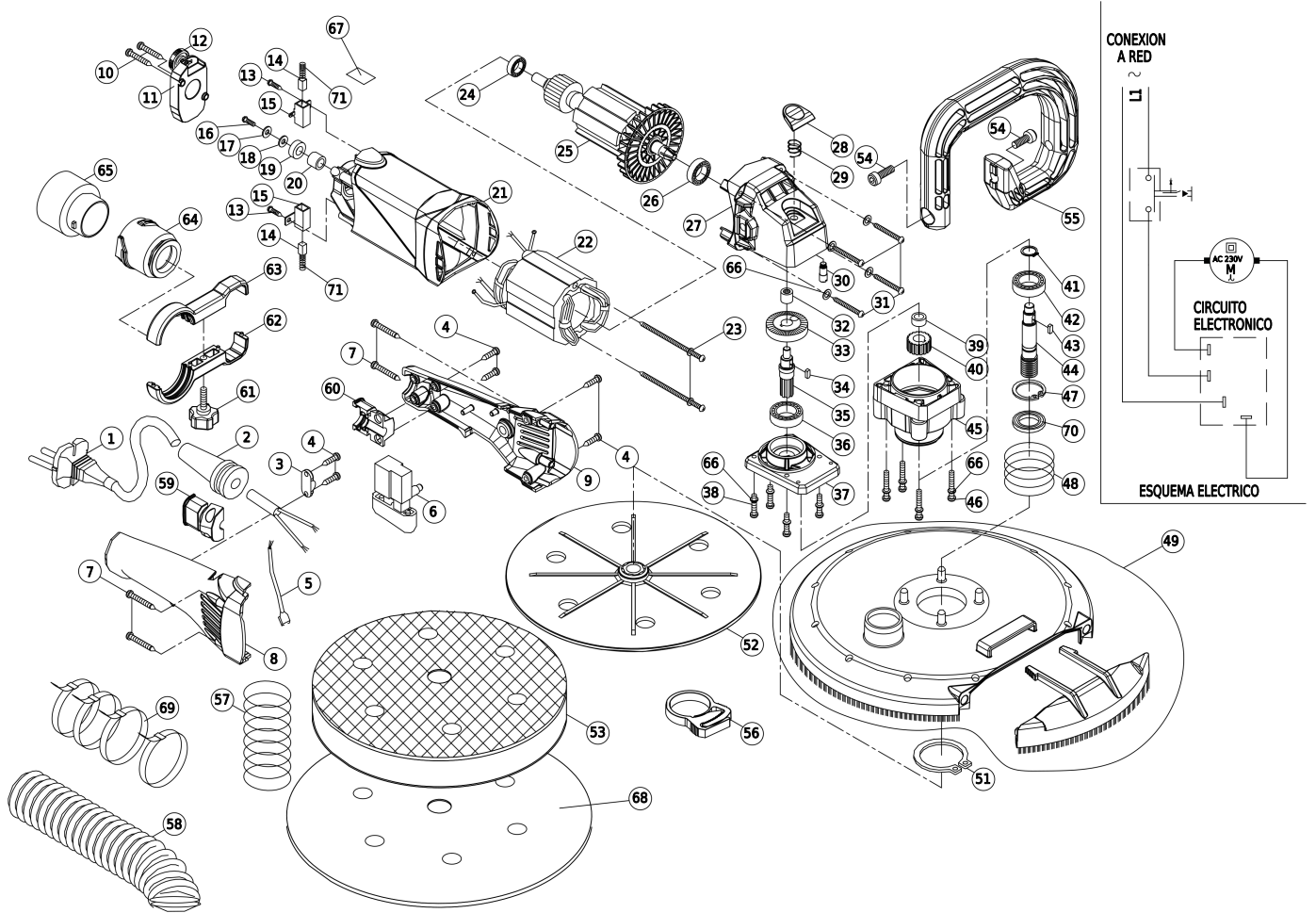




Technical information
Explosion drawing and parts list

LPM97S (9700000) LPM97S HAND WALL SANDER | Version B (From serial number 1196)





Technical information
Explosion drawing and parts list

LPM97S (9700000) LPM97S HAND WALL SANDER | Version B (From serial number 1196)

Pos.	Serial No.	Code	Description	Quantity
1		9745946	CORD ASS'Y (3 m)	1
2		9702696	SLEEVE	1
3		9702697	BRACKET	1
4		9770072	SCREW AUT. 3.9X14	6
5		9745947	WIRE	1
6		9715066	SWITCH (V1)	1
6	1949	9715079	SWITCH LPM97S (V2)	1
7		3570032	PAN HD. TAPPING SCREW 6X1 PH.BZ.	4
8		9702698	RIGHT COVER HANDLE (V1)	1
8	1949	9702859	LEFT HANDLE (V2)	1
9		9702699	LEFT COVER HANDLE (V1)	1
9	1949	9702860	LEFT HANDLE (V2)	1
10		1170028	PAN HD. TAPPING SCREW 8X3/4 PH.BZ.	2
11		9769072	ELECTRONIC CIRCUIT	1
12		9768461	SPEED ADJUSTMENT WHEEL	1
13		9570012	PAN HD. TAPPING SCREW 8X3/8 PH.B.	2
14		9717051	CARBON BRUSHES SET (V1)	1
14	1949	9717061	CARBON BRUSHES SET LPM97S (V2)	1
15		9718034	BRUSH HOLDER (V1)	2
15	1949	9718037	BRUSH HOLDER LPM97S (V2)	2
16		1772026	SCREW M.4X8 PH.	1
17		1680026	WASHER D.4.3 DIN125	1
18		9780074	RUBBER WASHER	1
19		9768460	MAGNET SUPPORT	1
20		9721509	SPACER	1
21		9702701	HOUSING (V1)	1
21	1949	9702861	HOUSING (V2)	1
22		9755200	STATOR ASS'Y 230 V	1
23		9570044	PAN HD.TAPPING SCREW 8X63	2
24		1910002	BALL BEARING 608-ZZ	1
25		9751209	ARMATURE ASS'Y 230 V	1
26		3110028	BALL BEARING 6000 2RZ	1
27		9706555	GEAR COVER	1
28		9702700	LOCK BUTTON	1
29		9726208	SPRING	1
30		9721508	LOCKING PIN	1
31		1570037	PAN HD. TAPPING SCREW 8X1 1/4 PH.BZ.	4
32		9711022	BUSHING	1
33		9787128	CONICAL WHEEL	1
34		9789066	KEY	1
35		9720120	DRIVE SHAFT	1
36		9310026	BALL BEARING 6001 ZZ	1
37		9706554	COVER	1
38		1472017	PAN HD. SCREW M.4X15 PH.	4
39		9712061	BUSHING	1
40		9787129	GEAR	1
41		1688015	RETAINING RING	1
42		4010005	BALL BEARING 6001 2RS	1



Technical information
Explosion drawing and parts list

LPM97S (9700000) LPM97S HAND WALL SANDER | Version B (From serial number 1196)

43	9789067	KEY	1
44	9720123	SHAFT (V2)	1
45	9706553	GEARS COVER	1
46	8575148	SCREW M.4X25 DIN912	4
47	9588137	RETAINING RING D.28	1
48	9726210	SPRING	1
49	9702711	DISC COVER ASS'Y	1
51	9788154	RETAINING RING	1
52	9702730	VELCRO DISC SUPPORT (V2)	1
53	9745948	SANDING DISC VELCRO	1
54	2375001	HEX. SOCKET HD. CAP SCREW M.8X15	2
55	9702708	COMPLEMENTARY HANDLE	1
56	9799593	CONNECTOR	1
57	9726209	SPRING	1
58	9799592	DUST COLLECTION PIPE	1
59	9702707	RIGHT BRACKET	1
60	9702706	LEFT BRACKET	1
61	9725142	KNOB	1
62	9702703	LOWER BRACKET	1
63	9702702	UPPER BRACKET	1
64	9702704	FAST CONNECTOR	1
65	9702705	BAYONET CONNECTOR	1
66	8082004	LOCKWASHER D.4	12
67	9719528	WARNING LABEL	1
68	9791117	PACK 25 U. SANDING DISC GR.80 VELCRO	1
69	9799599	BRACKET FOR CABLE/DUST COLLECTION PIPE	4
70	9702731	BALL BEARING PROTECTOR	1