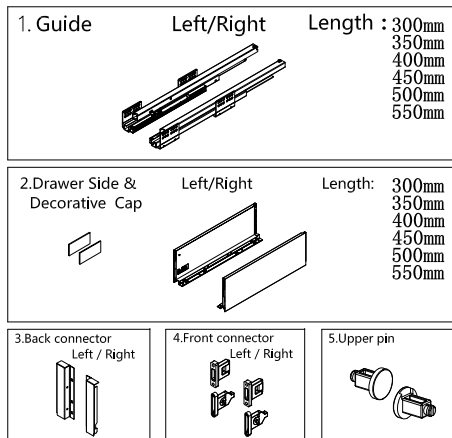




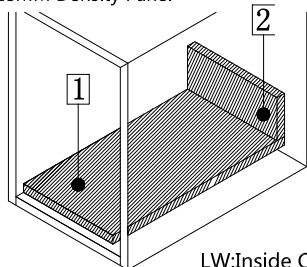
Special Features:

- Length: 300, 350, 400, 450, 500, 550mm.
- The drawer side-board is 171mm high.
- Drawer width can be designed freely with automatic error adjustment.
- Hidden full pullout silencing sliding skid can bear 35kg and enjoys excellent stability and quite and smooth sliding performance.
- Quick installation and dismantle.
- Newly-designed built-in damper is free from reinstallation and ensures soft and smooth drawer movements.

| Basic length | Internally usable drawer depth | Minimum installation depth of drawer | Minimum installation height |
|--------------|--------------------------------|--------------------------------------|-----------------------------|
| 300mm | 274mm | 300mm | 192mm |
| 350mm | 324mm | 350mm | 192mm |
| 400mm | 374mm | 400mm | 192mm |
| 450mm | 424mm | 450mm | 192mm |
| 500mm | 474mm | 500mm | 192mm |
| 550mm | 524mm | 550mm | 192mm |



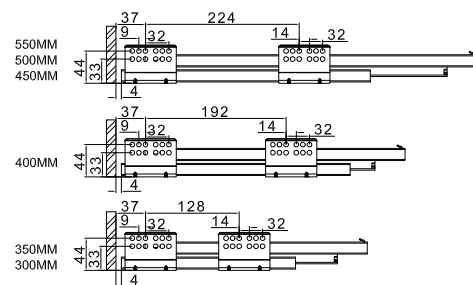
Technology pivot: Bottom and Back Panel Measurement 18MM Density Panel



LW: Inside Cabinet Width

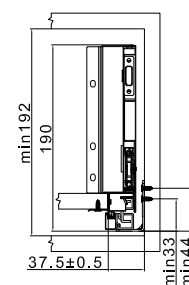
- Bottom panel width=Inside Cabinet Width-75±0.5
Bottom panel length=Runner length-10MM
- Back panel height= 151MM
Back panel width=Inside Cabinet Width-87±0.5

Runner Installation(mm)

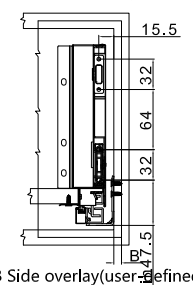


Basic length: 300/350/400/450/500/550

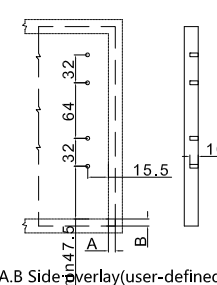
Inside Cabinet Dimension



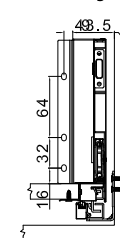
Front Panel Mounting Positions



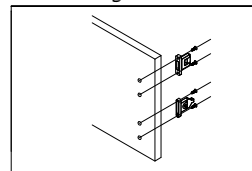
Front Fixing Brackets Positions



Back Panel Mounting Positions

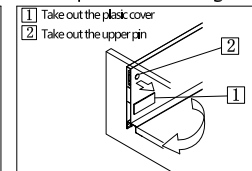


Front fixing brackets mounting



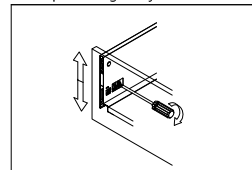
- 1 Tighten the fixing screw after installed the panel
- 2 Press the upper pin into panel after installed the panel

Front panel removing

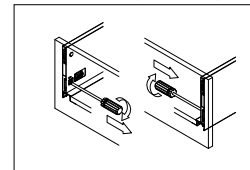


- 1 Loosen the fastening screws
- 2 Rotation to dismantle the panel

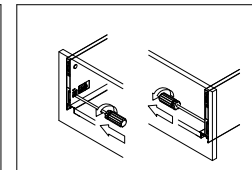
Front panel height adjustment : ±2mm



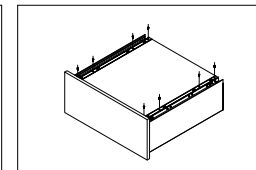
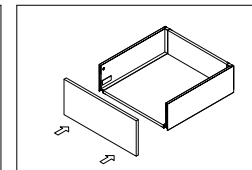
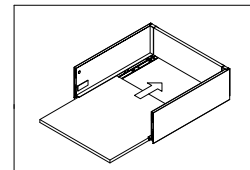
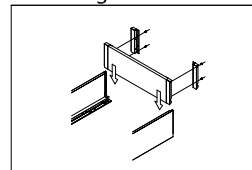
Front panel side adjustment : right 1mm



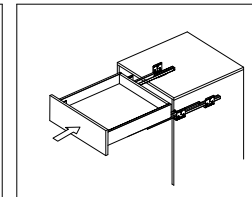
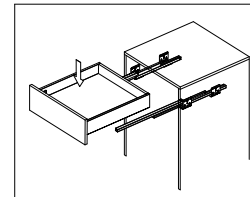
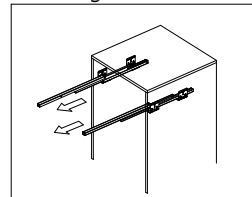
Front panel side adjustment : left 1mm



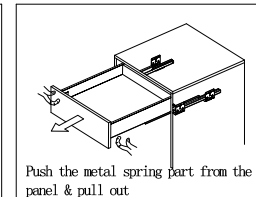
Mounting the drawer



Installing the drawer

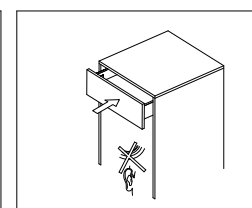
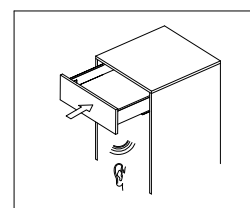
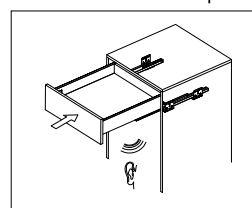


Removing the drawer



Push the metal spring part from the panel & pull out

Function of the damper



NEY Ltd
Stonebridge Trading Est
Sibree Road
Coventry
CV3 4FD

024 7630 8100
www.ney.co.uk
sales@ney.co.uk